

The Institution of Engineers (India)

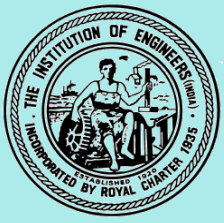


- **ISO 9001 – 2015 Certified**
- **A Scientific & Industrial Research Organisation recognised by Govt. of India**

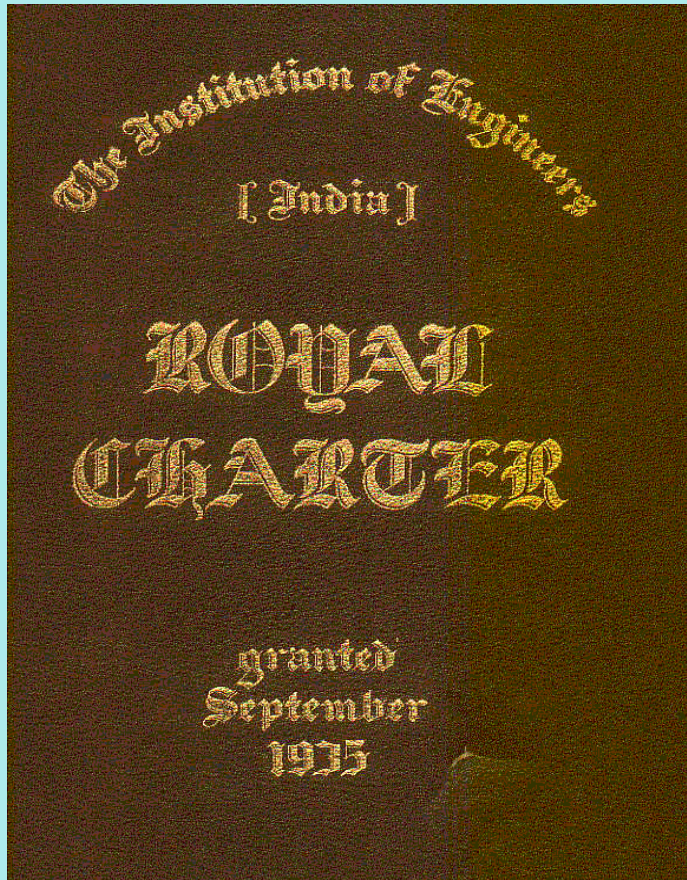
Presented by:

Dr S M Ali

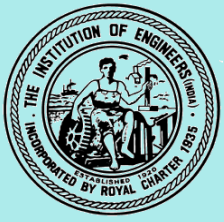
Director (Membership)



Royal Charter



IEI was granted
Royal Charter by
**His Majesty the
King George V of
England in 1935**



The Largest Professional Body of Engineers with more than 8 Lacs Corporate & Non-corporate Members

It is a multidisciplinary body encompassing the following 15 Engg disciplines/ divisions:

Civil

Agricultural

Electrical

Computer

Mechanical

Production

Mining

Electronics & Telecommunication

Metallurgical & Materials

Environmental

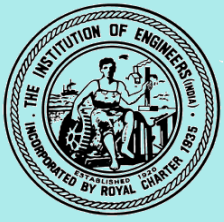
Aerospace

Chemical

Architectural

Marine

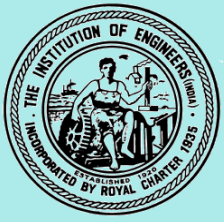
Textile



IEI Center and Chapters

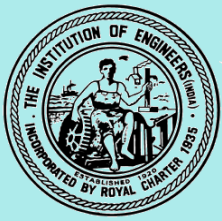
- **IEI has 125 State and Local Center across all over India**
- **IEI has Six Overseas Chapters at: –**

➤ ABU DHABI	➤ BAHRAIN
➤ DUBAI	➤ KUWAIT
➤ QATAR	➤ NEPAL



IEI Forum

- **National Design and Research Forum at Bangalore**
- **Rural Development Forum at Kolkata**
- **Sustainable Development Forum at Ranchi**
- **Safety & Quality Forum at New Delhi**
- **Water Management Forum at Ahmedabad**
- **National Skill Development Forum at Shimla**

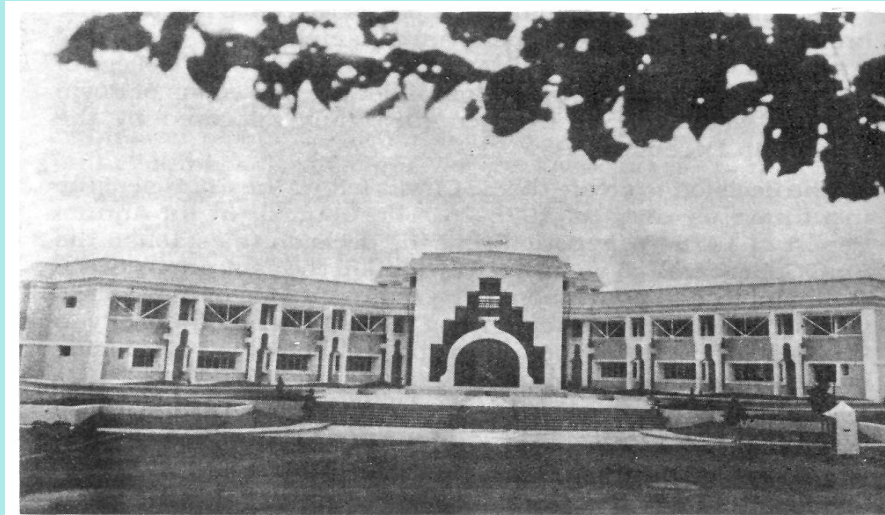


Autonomous Organ of IEI at Hyderabad



Engineering Staff College of India

Autonomous Organ of the Institution of Engineers (India)



Main Building of the Engineering Staff College of India



Professional Engineers (PE)

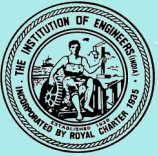
Certification by

The Institution of Engineers(India)

- Being the full member of International Professional Engineers Agreement (IPEA), the Institution of Engineers (India) is authorized to maintain the Register for IntPE from India.
- The Council of IEI authorized PE Certification from India as per the approved Guidelines

Professional Engineers (PE)

- The certification of Professional Engineers by IEI, under authority of Royal Charter, is a quality certification of the competency of the Professional Engineers being so certified by IEI.
- This register is maintained by IEI at national level.



Eligibility Criteria for IntPE/ PE

PE (India)

BE/B.Tech/ M.Tech or equivalent

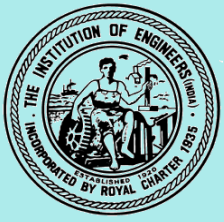
Minimum 5 years Professional experience

Minimum 2 years Professional experience in significant engineering activity

75 credit hrs Continued Professional Development (CPD)

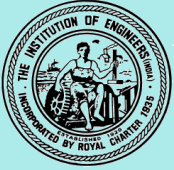
125 credit hrs Continued Professional Development (CPD) on renewal of PE

Membership of Professional Society



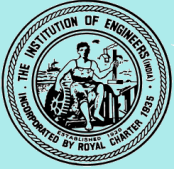
Key Benefits of PE

- Gives confidence to employer/prospective employer about competency of Engineer in a particular domain
- Enhances an engineering professional's stature, Makes them suitable for higher levels of responsibility
- A professional engineer may prepare, sign, seal and submit engineering plans and drawings to a public authority for approval, or to seal engineering work for public and private clients
- With the growing economy and massive expansion of technological infrastructure, the market demand of PE certified engineers are expected to be much higher.
- P.Eng. (India) Certification enables an engineer to become an independent engineering consultant, a valuer, a planner, a designer, an educator



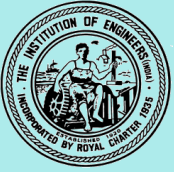
Qualities Possessed by Professional Engineer

- ❖ **Sound understanding of engineering principles**
- ❖ **Ability to use relevant existing technology coupled with the ability to locate and use new technologies to benefit his/her work and engineering generally**
- ❖ **Ability to identify and apply appropriate scientific methods to produce alternative solutions to complex engineering problems**
- ❖ **Independent judgment in the application of engineering science and knowledge particularly in his/her chosen field**
- ❖ **Leadership skills to plan, manage and direct the human, material and financial resources required to solve complex problems**
- ❖ **High level of understanding and application of engineering economics**
- ❖ **Commitment to the public interest in all aspects of work, including health, safety, risk, financial, commercial, legal, environmental, social, energy conservation and sustainability**



Assessment & Approval Procedure for PE (India)

- ❖ **Scrutiny and Evaluation by the Secretariat of IEI in the Structured Format based on the Qualification, Years of Experiences, CPD Requirements, Self appraisal**
- ❖ **A Committee consisting of the Chairman of the respective Division Board and an eminent expert of the particular discipline further assess the evaluation report of the Secretariat, verify the documents and give their final recommendation for approval**
- ❖ **For application from very senior persons, the Certificate for PE may be awarded based on their lifetime achievements. In such case, documents be sent to the Assessment Committee for review**



Evaluation Mechanism of Continuous Professional Development

- CPD programme includes **‘Technical Educational Knowledge Update’** through added qualifications
- **‘Professional Expertise & Management Skills Upgrade’** through additional training and experience
- Aggregate of Credit Hours earned determine an applicant for PE eligibility with at least **75 Credit Hours** for fresh applicants since Graduation and **125 Credit Hours** within his/her five years certification validity period for renewal



CPD Score Sheet for PE

<u>Category</u>	<u>Classification</u>	<u>CPD Program</u>	<u>CPD Weight Factor (M)</u>	<u>Applicable Hours (H)</u>	<u>Credit Hours Obtained (M x H)</u>
1.	Formal Education Upgrade in Engineering / Management	Doctorate	2	30	
		Post Graduate Degree	2	25	
		Post Graduate Diploma	2	20	
2.		Post Graduate Correspondence / Certified online courses offered by reputed Institutes/ Organizations	1.5	20	



<u>Category</u>	<u>Classification</u>	<u>CPD Program</u>	<u>CPD Weight Factor (M)</u>	<u>Applicable Hours (H)</u>	<u>Credit Hours Obtained (M x H)</u>
3.	Authoring Books	Authoring books in field of specializations published by a reputed publisher (having ISBN No.)	2	20	
		Contribution in Authoring any Chapter of books published by a reputed publisher	2	3 hrs for each chapter	



<u>Category</u>	<u>Classification</u>	<u>CPD Program</u>	<u>CPD Weight Factor (M)</u>	<u>Applicable Hours (H)</u>	<u>Credit Hours Obtained (M x H)</u>
4.	Continuing Education and Training Activities	Trainings	0.5	Actual hours of attendance	
5.		Patent Applied	1.5	10 for each patent	
		Patent Granted	2.5		

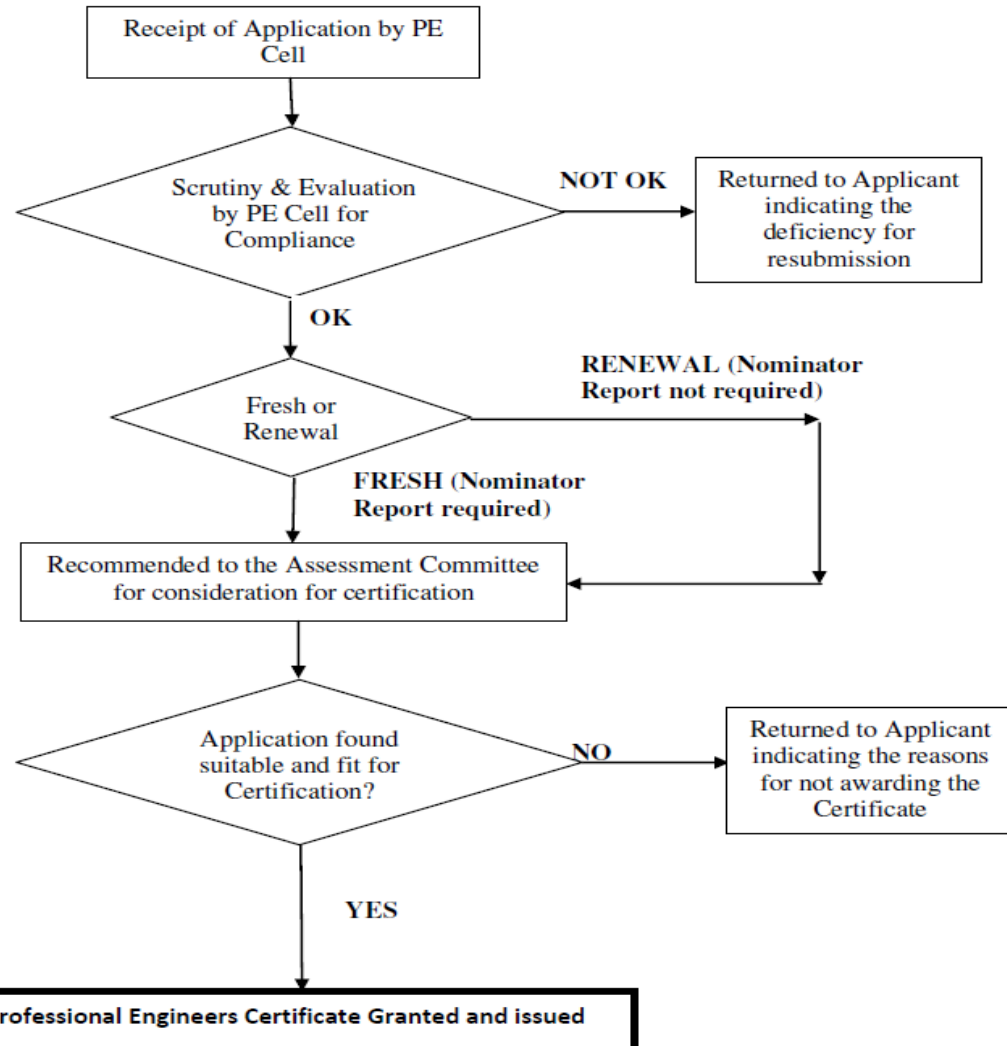


<u>Category</u>	<u>Classification</u>	<u>CPD Program</u>	<u>CPD Weight Factor (M)</u>	<u>Applicable Hours (H)</u>	<u>Credit Hours Obtained (M x H)</u>
6.	Presentation Papers and other Activities	Delivered Lecture or Symposium Panelist	2	Actual lecture hours	
7.		Participation in an academic meeting of reputed Forum/ Institute	1	Hours spent at an academic meeting	
8.		Paper publication in Journal or presentation of paper in National/ International Conference	1	5 to 10 hours to write one paper	
9.		Writing Technical Report	1	5 to 10 hours to write one report	
10.		Attending an Expert committee meeting like NIT, IEEE etc.	0.5	5 hrs per selection committee	
11.		Part of Professional contribution such as Design, R&D, Project Management in the field of Engineering & Technology	1	Hours spent for professional contribution	



Process Flow for PE

FLOW DIAGRAM FOR CERTIFICATION OF PROFESSIONAL ENGINEER (INDIA) PROCESS





Mandatory requirements

Professional Engineer shall have a seal of his/ her own as per design approved by the PE Cell which shall have following information –

Name of the PE:

PE No.:

Issuing Authority:

Discipline:

Valid up to:

This seal must be affixed on the drawing/ design/ report/ certification certified by him/ her



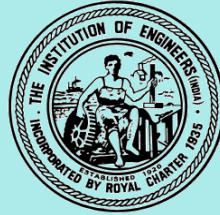
Fee for PE

Sl. No.	Application Type	Fee for Applicants from India & Nepal. (including GST)	Fee for Applicants from other Countries.
		INR	US \$
1.	PE Fresh	Rs.11,800.00	\$ 300.00
2.	PE Renewal	Rs.9,440.00	\$ 250.00



REFUND POLICY

If the candidate withdraws himself/ herself from the certification process or if the candidate does not meet the requirement or does not submit the documentary evidences against the requirement he/ she will be given three reminders after which his/ her file will be closed and he/she will be entitled to refund of **Rs.7000/- (for Fresh)** and **Rs.5000/- (for Renewal)**



NATIONAL & INTERNATIONAL LINKS WITH OTHER PROFESSIONAL BODIES



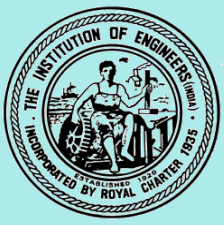
International Links

- **First ever Indian body to represent the country in -**
- **World Mining Congress (WMC)**
- **World Federation of Engineering Organizations (WFEO)**
- **Commonwealth Engineers' Council (CEC)**
- **Federation Internationale du Beton (*fib*)**



Professional Bodies having Bilateral Links with IEI





Appreciate your patient attention!

*Thank
You*